



OWNER'S MANUAL

**Models: PSB-6 Bus Bar
85-129 Bus Bar**

**Questions?
Call Customer Service:
1-800-621-5485**

INSTALLATION AND OPERATING INSTRUCTIONS

WARNING

Read, study and understand all warning labels and operating instructions furnished with this or related equipment prior to use. If any of this material is unclear, contact your factory representative for clarification. Never allow untrained or improperly trained personnel to operate this equipment.

1. When connecting and disconnecting battery charger leads, be certain power cord from battery charger is disconnected and all switches are in the **OFF** position.
2. Disconnect battery from vehicle before charging. Do not use any portion of the vehicle's chassis or engine as the negative terminal (or ground) in a charging circuit while using the Bus Bar.

Do not overcharge any battery.

Do not smoke, have an open flame or cause a spark in the vicinity of any battery during recharging.

Do not expose this Bus Bar assembly to rain, snow or other form of moisture. Always keep unit dry and clean.

Be certain battery clips, wires and cords are in good condition. Replace if there is any sign of excessive wear, damaged insulation or broken wires.

7. Be certain all wire terminals and connections are tight.
8. Be certain of polarity when assembling Bus Bar. RED-positive (+), BLACK-negative (-).
9. Do not install this Bus Bar less than 19 inches (50cm) above ground level.
10. Before charging any battery, be aware of and check the following:
 - Be certain of the battery polarity is correct.
 - Be certain the battery vent caps are in place.
 - Be certain the battery is not frozen – **Never attempt to charge a frozen battery!**
 - **Always wear adequate protective clothing and eye protection while working around batteries.**
 - Never operate while standing in water, snow or direct rain.
 - Be certain the battery charger cables are connected to the proper Bus Bar terminals (RED) clamp from charger to (+) positive terminal of Bus Bar, and BLACK clamp of charger to (-) negative terminal of Bus Bar.
 - Be certain battery charger is OFF or unplugged while connecting or disconnecting leads to the batteries from the Bus Bar.
 - Batteries contain acid. Protect against exposure to skin and eyes or severe burns may result.

11. Install and use in a well ventilated area.
12. Read, study and understand all warnings and operating procedures for the battery charger you are using with Bus Bar.
13. It is your responsibility to keep all warning labels and instructional literature legible and intact.
14. Failure to heed these warnings may result in equipment and/or property damage and/or personal or bodily injury.
15. **WARNING:** This product contains one or more chemicals known to the State of California to cause cancer and birth defects or other reproductive harm.

PRIOR TO OPERATION

1. This unit must be properly assembled, and must be fastened to a secure mounting surface prior to use.

It may be mounted to a wall, workbench or other stable surface. For wall type mounting, install at least 19 inches (50cm) above floor. When mounting to a metal panel, drill (3) ¼" holes, and use the Phillips head screws provided.
2. The Bus Bar may be used as a template to mark mounting hole locations.
3. When not in use, clamp all battery leads on the (clamp) location slot in the front of Bus Bar.
4. Be careful never to allow black clips and red clips to touch. This will cause a spark and short circuit if the Bus Bar is connected to either a charger or other batteries.

CONNECTING BATTERIES

1. All batteries to be charged must be the same voltage, or special procedures must be followed. (See "**NOTE**" on the following page.)
2. Place all batteries to be charged within 3 feet (90cm) of the Bus Bar.
3. Check each battery electrolyte level and fill with distilled water to manufacturer's recommended level if necessary.
4. Before connecting batteries:
 - A. The charger must be **OFF** when connecting or disconnecting batteries and Bus Bar.
 - B. Connect the charger red clip and black clip to the Bus Bar positive and negative terminals respectively, then turn on charger AC power. If the LED is green, the clip connection is correct. If the LED is red, reverse the clip connections until the green light is on. Turn off the charger.

- C. Connect a red clip and a black clip of the Bus Bar to the positive and negative terminals of each battery respectively. (See Figure 1) If the LED light is green, the clip connection is correct. Otherwise reverse the connections until the light turns green. When the correct connection is obtained, take off **only** the red clip and mount it on the bar. Continue this process until all the battery connections have been checked.

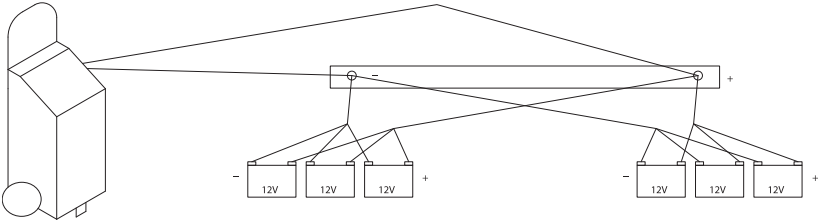


Figure 1
Hook-up Pictorial Diagram

- D. Return all of the red clips to the respective battery's positive terminals, then turn the charger power ON to begin charging the batteries.

Note: When used with a battery charger of the appropriate voltage output, six batteries may be charged at one time. A combination of 6 volt and 12 volt batteries may be charged with a 12 volts charger, but the 6 volt batteries must be charged in (series) pairs with batteries of similar capacity, as shown (Figure 2).

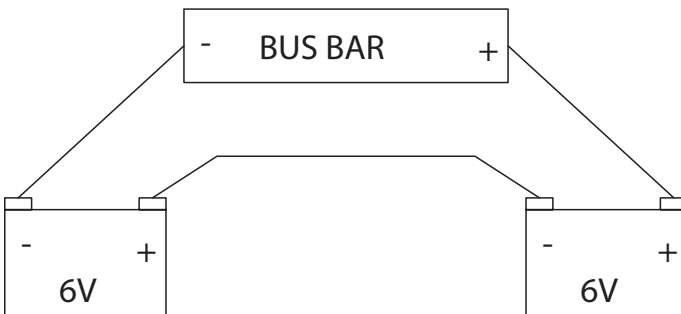


Figure 2

CHARGING INSTRUCTIONS

1. Be sure that all batteries have been connected according to the “**Connecting Batteries**” section and have a similar state of charge level. If the separation in levels is too great, overcharging or battery damage may occur.
2. Turn the charger on. If the charger is equipped with a timer, use of “hold” position is not recommended as over or uneven charging may result. Adjust the charging rate to a maximum of 20 amps per battery (*divide charging rate by number of batteries*), or to the charger’s maximum rate, whichever is less.
3. Charge until the batteries begin gassing, or as an estimate, 3 hours per battery.
4. If one battery has a cell that is gassing freely, and the others are not, the battery is defective and should be removed. Be sure to power off the battery charger before doing so.
5. When charging motorcycle type batteries, do not exceed a charging rate of 2 amps per battery.
6. Turn the charger off before moving or removing any leads.

BUS BAR ASSEMBLY

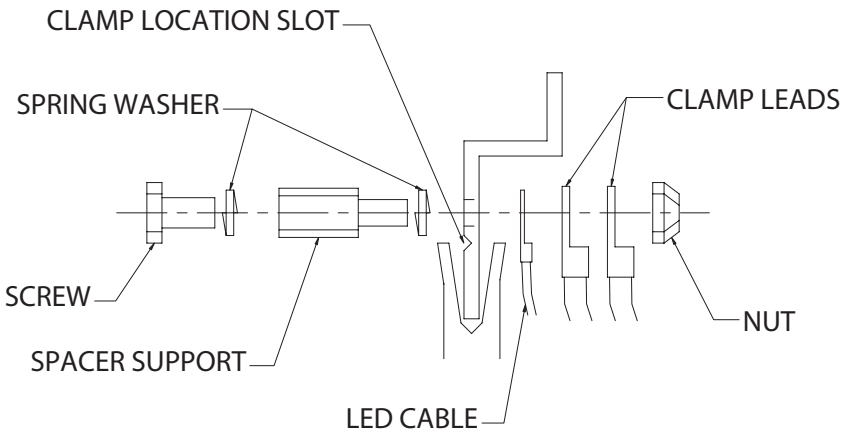


Figure 3

BEFORE RETURNING FOR REPAIRS

For information about troubleshooting,
contact customer service for assistance:

services@schumacherelectric.com
www.batterychargers.com

or call 1-800-621-5485, Monday-Friday 7:00AM to 5:00PM CST

For **REPAIR OR RETURN**, contact Customer Service at 1-800-621-5485. **DO NOT SHIP UNIT** until you receive a **RETURN MERCHANDISE AUTHORIZATION (RMA)** number from Customer Service at Schumacher Electric Corporation.

LIMITED WARRANTY

SCHUMACHER ELECTRIC CORPORATION, 801 BUSINESS CENTER DRIVE, MOUNT PROSPECT, IL 60056-2179, MAKES THIS LIMITED WARRANTY TO THE ORIGINAL RETAIL PURCHASER OF THIS PRODUCT. THIS LIMITED WARRANTY IS NOT TRANSFERABLE OR ASSIGNABLE.

Schumacher Electric Corporation (the "Manufacturer") warrants this product for one (1) year from the date of purchase at retail against defective material or workmanship that may occur under normal use and care. If your unit is not free from defective material or workmanship, Manufacturer's obligation under this warranty is solely to repair or replace your product, with a new or reconditioned unit, at the option of the Manufacturer. It is the obligation of the purchaser to forward the unit, along with proof of purchase and mailing charges prepaid to the Manufacturer or its authorized representatives in order for repair or replacement to occur.

Manufacturer does not provide any warranty for any accessories used with this product that are not manufactured by Schumacher Electric Corporation and approved for use with this product. This Limited Warranty is void if the product is misused, subjected to careless handling, repaired, or modified by anyone other than Manufacturer or if this unit is resold through an unauthorized retailer.

Manufacturer makes no other warranties, including, but not limited to, express, implied or statutory warranties, including without limitation, any implied warranty of merchantability or implied warranty of fitness for a particular purpose. Further, Manufacturer shall not be liable for any incidental, special or consequential damage claims incurred by purchasers, users or others associated with this product, including, but not limited to, lost profits, revenues, anticipated sales, business opportunities, goodwill, business interruption and any other injury or damage. Any and all such warranties, other than the limited warranty included herein, are hereby expressly disclaimed and excluded. Some states do not allow the exclusion or limitation of incidental or consequential damages or length of implied warranty, so the above limitations or exclusions may not apply to you. This warranty gives you specific legal rights and it is possible you may have other rights which vary from this warranty.

THIS LIMITED WARRANTY IS THE ONLY EXPRESS LIMITED WARRANTY AND THE MANUFACTURER NEITHER ASSUMES OR AUTHORIZES ANYONE TO ASSUME OR MAKE ANY OTHER OBLIGATION TOWARDS THE PRODUCT OTHER THAN THIS WARRANTY.

Schumacher® and the Schumacher logo are registered trademarks
of Schumacher Electric Corporation.